

Customer :

customer

Customer part :

customer part

Comment :

Comment

S1=2.18

S2=2.66

Tmax=456

Tp S2=495.0

PI=0.45

HI=109

Sample =1639.10

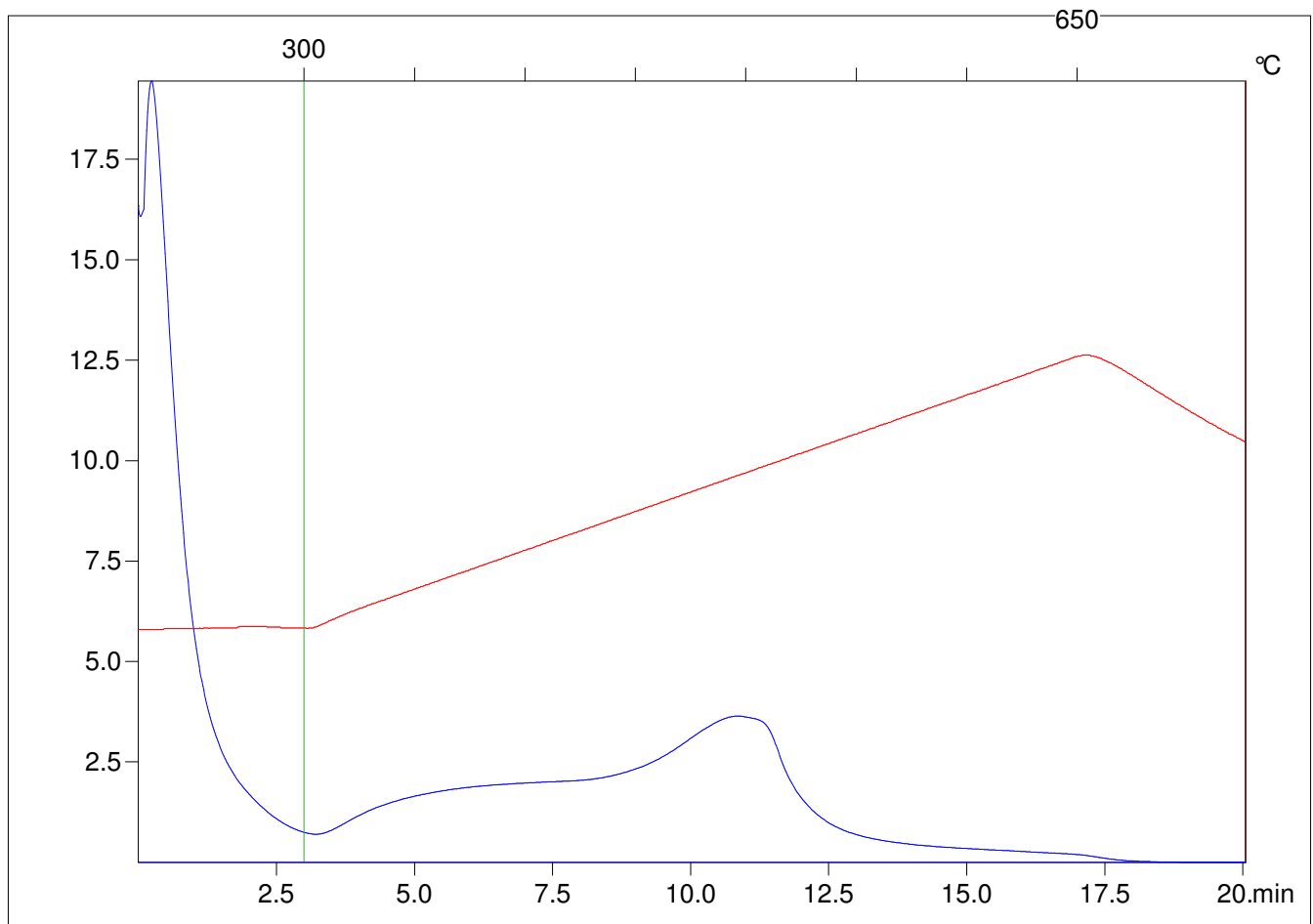
Method =Bulk Rock

Cycle=Basic

KFID(10*9)=1444

Qty =70.8

TOC=2.43



C:\VINCI\PK1792\PK039.R00 : FID pyrolysis graphic

State

Pyro Status

Oxi Status